



2000 Sea Ray 460 Sundancer

Boat Type: Motor Yacht

Address: Orange Beach, AL, US

Price: \$190,000



OVERVIEW

NEW LISTING MORE MEDIA COMING SOON

CHECK OUT THE 3D VIRTUAL TOUR HERE: <https://my.matterport.com/show/?m=34g89LTvMR4>

Well kept turn key Sea Ray 460 Sundancer with factory hardtop, Hydraulic swim platform with dighy chalks, and custom stainless steel cockpit framed shade with optional full isinglass enclosure, Cummins 6CTA power with just over 1000 hours (1000 Hour service performed; injectors, injector pumps, valves, etc. 1006 hr. Strb. 1010 Port current April 2019) Upgraded Garmin Chartplotter, VHF, xHD2 Open Array Radar and GMI 10. Vetus 24V Bow Thruster. 4 New LCD HD TV's with HD KVH Satellite TV and Blu-ray. LED Lighting throughout, including underwater lights. Updated cabinet latches and trim bezels from brass to satin nickel. Fresh bottom job and hullside/topside wax March 2019.

- The 6CTA 8.3 (450 Diamond) is the most sought after marine diesel in both recreational and commercial markets
- Proven mid-range diesel platform with mid-stop wet liners, 12-valve design, and a simple to service top-end

- HX or Keel Cooling configurations / Seawater or Jacket Water Aftercooled
- The 6CTA 8.3 leverages a simple mechanical designed fuel injection system along with a base engine that can be rebuilt using common tools

SPECIFICATIONS

Basic Information

Manufacturer:	Sea Ray	Vessel Name:	
Model:	460 Sundancer	Boat Type:	Motor Yacht
Year:	2000	Hull Material:	Fiberglass
Category:	Power	Hull Type:	
Condition:	Used	Hull Color:	
Location:	Orange Beach, AL, US	Designer:	
Available for sale in U.S. waters:	Yes	Flag of Registry:	

Dimensions & Weight

Length:	45 ft - 13.72 meter	Draft - max:	3 ft 7 in - 1.09 meter
LOA:	46 ft - 14.02 meter	Bridge Clearance:	-
Beam:	14 ft 8 in - 4.47 meter	Dry Weight:	28000 ft - 8534.4 meter

Engine

Make:	Cummins	Engine Type:	Inboard
Model:	6CTA	Drive Type:	
Engine(s):	2	Fuel Type:	Diesel
Hours:	1004	Horsepower:	430 (Individual), 860 (combined)
Cruise Speed:	-	Max Speed:	-
Range:	-	Joystick Control:	No

Tank Capacities

Fuel Tank:	400 gallons - 1 tank(s)	Holding Tank:	60 gallons - 1 tank(s)
Fresh Water Tank:	100 gallons - 1 tank(s)		

Accommodations

Total Cabins:	2	Crew Cabins:	1
Total Berths:	-	Crew Berths:	1
Total Sleeps:	1	Crew Sleeps:	1
Total Heads:	2	Crew Heads:	1
Captains Cabin:	-		

DESCRIPTIONS

Manufacturer Provided Description

Extended cruising not only requires a boat that was built for the long haul, but a boat that was built to make the trip completely enjoyable. That's why Sea Ray created the 460 Sundancer. The cockpit of the 460 Sundancer creates a relaxing atmosphere with a custom slide and swivel helm seat with a flip-up thigh-rise for the captain, and a Euro-style companion bench seat. The ergonomically designed control station not only puts the latest Raytheon electronics and Sea Ray's backlit instrumentation close at hand, it also reflects Sea Ray's dedication to style with a tan dash gelcoat and high-gloss burl wood panels. There's even a digital LCD systems monitor for engine diagnostics and pump monitoring. Passengers have plenty of room to enjoy the sun with spacious U-shaped cockpit seating (with an electrically actuated retractable sunpad), and a movable cockpit table. Carefully planned details like a snap-in carpet liner, self-bailing fiberglass cockpit liner, a wetbar in the side panel to port, and a Clarion AM-FM digital cassette stereo with six-disc CD changer, subwoofer, four speakers, and a cockpit remote control make the 460 Sundancer ideal for quality entertaining. The oversized swim platform is easily accessed through a transom door. When it comes to storage, the 460 Sundancer has all the space needed for long excursions, including aft wall fender storage which keeps docking equipment neatly tucked away. Additional gear can also be stowed in the seats and side storage areas in the cockpit. The cabin of the Sea Ray 460 Sundancer has a comfortable salon with an electric sleeper sofa, movable dining table, and an entertainment center featuring a TV - VCR - radio combination, and Clarion AM-FM digital cassette and single CD stereo system with six-disc CD changer, amplifier, and four speakers. A washer and dryer combination has been included in the mid stateroom for at-home convenience. Complementing the decor of the room are granite-look countertops, handcrafted wood trim, and lush marine-grade carpeting. The galley comes complete with everything necessary for long trips, including a recessed three-burner cooktop, refrigerator and freezer, microwave oven, even a Spacemaker coffee maker. Owners and their guests can retreat to their own private quarters on the Sea Ray 460 Sundancer, including a forward stateroom with a full-size bed, cedar-lined hanging lockers, vanity, and sliding privacy door with full-length mirror. In the mid stateroom, a comfortable sofa converts to a double bed by simply flipping a switch. There are two private head areas featuring a VacuFlush head with shower, plus both staterooms have their own entertainment centers with TV - VCR - radio combinations. The 460 Sundancer is powered by twin 340 horsepower Caterpillar V-drives with a patented underwater exhaust system. The optional engines are twin 430 horsepower Cummins V-drives. The 460 Sundancer has durable underwater gear including a unique bonding system, manganese-bronze rudders and struts, seacocks on all fittings, and dripless shaft logs with an extra seal carrier kit.

Equipment List

Sea Ray 460 Sundancer Specifications - Standard Equipment Hull and Deck - 316 Stainless Steel Bow Rail - 316 Stainless Steel Taffrail - 316 Welded Stainless Steel Deck Rails - 316 Welded Stainless Steel Stanchions - 4-Bolt Stainless Steel Cleats (8) - Boot Stripes - Bottom Paint - Color-Coordinated Thru-Hull Fittings - Color Schemes (Blue, Green or Black & Tan) - Fiberglass Stringer System - Fiberglass Swim Platform w- Concealed Stainless Steel Ladder - Foam-Filled Under-Floor Areas - Forward Deck Sun Pad - Gel-Coat (Arctic White) - Gel-Coated Bilge Area - High-Performance Vinylester Resin - Insulated Engine Compartment - Integral Bow Pulpit - Integral Hull Vent System - Meets Applicable USCG & ABYC Standards - Navigation Lights - NMMA Certification - PVC Rub Rail w- Stainless Steel Insert - Rod Holders (2) - Stainless Steel Bilge Ladder - Stainless Steel Deck Fill Plates - Stainless Steel Port Lights (4 Fixed, 6 Opening) - Translucent Deck Hatches (2) w- Locks & Sky Screen Covers - Vac Pac Windlass - Anchor Rope Storage w- Hatch & Washdown Faucet - Lofrans Progress I Rope - Chain Windlass w- Foot Switches & Stainless Steel Anchor Chute Cockpit - 12V Clarion AM-FM Digital Cassette Stereo, 6-Disc CD Changer, Amplifier, Subwoofer w- 4 Speakers & Cockpit Remote Control - Aft Wall Fender Storage w- Dock Line Storage Straps - Burl Instrument Panels - Cockpit Icemaker - Cockpit Table - Custom Slide - Swivel Helm Seat w- Armrest and Euro-Styled Companion Bench Seat w- Storage Below - Fiberglass Sport Spoiler w- Stainless Steel - Grab Rails & Overhead Lighting - Gas-Assisted Bilge Service Hatch - Indirect Cockpit Lighting - Molded-In Cockpit Boarding Steps - Portside Panel Storage w- Wet Bar, Faucet & Grab Rail - Self-Bailing Fiberglass Cockpit Liner - Snap-In Carpet Liner - Tan Dash Gel-Coat - Transom Door - U-Shaped Cockpit Seating w- Electrically Actuated Retractable Sun Pad - Wood-Accent Steering Wheel Cabin - 12V Directional Lighting - 12V Indirect Lighting - 120V Lighting - 120V Outlets Throughout (GFI Protected) - Deep-Pile Marine Carpet - Fabric Day - Night Shades w- Drape Trim - Granite-Colored Countertops & Tables (Aurora or Sandstone) - Handcrafted Wood Trim - Interior Sunbrella Carpet Runners - Throw Pillows Galley - 120V - 12V Refrigerator - Freezer - Dish Storage Cabinet - Fiberglass Countertop w- Corian Cutting Board & Grohe Faucet - Glass & Bottle Storage Cabinet - Microwave - Recessed Three-Burner Cooktop w- Corian Cover (240V) - Spacemaker Coffeemaker (120V - 60 Cycle) - Stainless Steel Handrail - Trash Chute w- Concealed Removable Trash Can - Upper & Lower Storage Cabinets Salon - Built-In Storage w- Doors - Electric Convertible Sofa - Sleeper - Floor Storage - Movable Dining Table - 12V Clarion Double Din AM-FM Digital Cassette & Single CD Stereo, w- 6-Disc CD Changer, Amplifier & 4 Speakers - Color TV - VCR - Radio Combo w-

Remote, Antenna & TV Coax to Dockside (120V - 60 Cycle) Forward Stateroom - Cedar-Lined Hanging Lockers w- Mirrored Doors - Drawers & Gas-Assisted Hatch for Storage Under Bed - Floor Storage Compartment - Full-Size Bed w- Pillows, Sheets & Coordinated Spread - Mirrored Rope Locker Bulkhead - Sliding Privacy Door w- Full-Length Mirror - Storage Cabinets - Vanity w- Storage & Stool - Color TV - VCR - Radio Combo w- Remote, Antenna & TV Coax to Dockside Forward Stateroom Head - Corian Vanity Top w- Sink, Storage & Medicine Cabinet w- Mirror - Fiberglass Shower Stall w- Circular Acrylic Door - Holding Tank Level Indicator - Hot Water System - VacuFlush Head w- Fiberglass Settee Lid Mid Stateroom - Built-In Storage - Cedar-Lined Hanging Locker - Drawer Storage - Electric Convertible Sofa - Sleeper - Privacy Pocket Door - Washer - Dryer Combo (120V - 60 Cycle) or (220V - 50 Cycle) - Color TV - VCR - Radio Combo w- Remote, Antenna & TV Coax to Dockside & w- VCR Tape Storage Mid Stateroom Head - Corian Vanity Top w- Sink, Storage & Medicine Cabinet - Holding Tank Level Indicator - Hot Water System - Shower Curtain - VacuFlushHead w- Fiberglass Settee Lid Windshield and Canvas - 316 Stainless Steel Handrails - Aft Sun Shade - Stainless Steel Windshield w- Curved Tri-Section Tinted Glass & Electric Front Vent - SunbrellaBimini Top w- Boot & Vertical Top Storage - Windshield Washer - Windshield Wipers (2) - Aft Curtain - Canvas Storage Bag - Cockpit Sun Shade - Front Curtains - Side Curtains Technical - 12V Receptacle - 120V - 50 Amp - 12V Converter - 50 Amp Electronics Circuit w- Ground Plate - 60 Gallon Head System Holding Tank w- Dockside Pump-Out - 8-D Batteries w- Boxes (2) & Group 27 for Genset (1) - ACR Remote-Controlled Spotlight - Aluminum Fuel Tanks w- Remote Fuel Filters & Electric Senders - Automatic Bilge Pumps (2) - Automatic Engine Synchronizer - Automatic Shower Sump Pump & Float Switch - Backlit Switch Panel w- Illuminated Weatherproof Rocker Switches & Dimmer Control - Bilge Lights - Bilge Washdown Faucet - Binnacle Dual Gear Shift & Throttle Controls - Cabin High Water Alarm & Pump - Color-Coded Wiring w- Chafe Protection - Compass - Concealed Dual Air Horns - Crossover Fuel System - Custom Sea RayBacklit Instrumentation w- Low-Glare Blue Night Lighting - Digital LCD Systems Monitor for Engine - Diagnostics & Pump Monitoring - Dockside Water Inlet - Dual 12V Pressure Water System w- 8.5 Gallon 240V Water Heater - Dual RacorFilters & Fuel Shutoff Valves - Electric Bilge Blowers (2) - Emergency Start System for Engines - Engine Alarms (Water, Oil & Transmission Oil) - Engine Drip Sumps - Freshwater Washdown w- Hot & Cold Cockpit Shower - Galvanic Isolator - Glendinning Cablemaster (240V - 60 Cycle) with 75' Cord & Wireless Remote - Halon System - High Water Bilge Alarm & Pump - Hydraulic Steering w- Tilt Wheel - Main DC Breaker Panel - Main Distribution Panel - Oil Changer System - Patented Underwater Exhaust - Power Vents in Head & Galley - Remote Circuit Breaker Panel - Remote Generator Instrument Panel - Ship's Bell - Systems Monitor Panel - Tachometers w- Hourmeters - Telephone Inlet w- Cord - Underwater Exhaust (Patented) - Vacuum is Beam Generator - Remote Start - Muffler, Freshwater Cooling, Fuel Filter & Seawater Strainer - (120V - 60 Cycle) 8.0 kW Westerbeke Diesel Air Conditioning and Heating - 25,000 BTU - 2.1-Tons - (240V - 60 Cycle) or (220V - 50 Cycle) Raytheon Electronics - GPS 398 - Raydata Multifunction Instrument Depth Finder, Speed - Sumlog, Water Temperature - VHF Radio - 220 w- Remote Speaker & Antenna Underwater Gear - 1.75" Stainless Steel Prop Shafts - 4-Blade Nibral Propellers - Bonding System w- Large Zinc Hull Plate - Dripless Shaft Logs w- Extra Seal Carrier Kit - Hydraulic Trim Tabs - Manganese-Bronze Rudders & Struts - Propeller Modules - Seacocks On All Underwater Fittings - Seawater Strainers Engine - T-V-CAT3116TA CaterpillarV-Drives (T-340 hp - 254 kW) Sea Ray 460 Sundancer Optional Equipment Engine (Twin Diesel V-Drives including Oil Changer System) - T-VD-Cummins6CTA 8.3M (T-430 hp - 321 kW) Generator - Remote Start - Muffler, Freshwater Cooling, Fuel Filter & Seawater Strainer - 220V - 50 Cycle 6.0 kW Westerbeke Diesel Options with Raytheon Electronics - Autopilot is Raypilot 650 - Radar is R41XX or R70RC Optional Entertainment Center for Salon - Bose Lifestyle 20 Stereo System with two Jewel Cube Speakers & LS Bass Module Individual Options - (50 Amp - 120V - 60 Cycle) & (30 Amp - 120V - 60 Cycle) Dockside Power with 50' Cords - All Chain w- Windlass in Lieu of Rope - Chain - Bow Thruster - Electronics Controls - Generator Sound Box - Gray Water System - Hydraulic Marine Lift Swim Platform w- Wireless Remote - Macerator w- Seacock Interlock System - Manual Bilge Pump System - VitricorInterior Wood Package (Cherry or Clear Maple) - Storage Cradle - CE Option Safety Package - 5-8" x 40' Dock Lines (6) - Boat Hook - Chart Holder - Fender Holders (4) - Fenders (4) - Fire Extinguishers (3) - First Aid Kit - Flare Kit w- Flush Holder - Life Jackets (8) - Ring Buoy (19")

Engine Notes

Diesel V-drives have a patented underwater exhaust system. Optional engine packages include Cummins or Volvo V-drives.

Disclaimer

The Company offers the details of this vessel in good faith but cannot guarantee or warrant the accuracy of this information nor warrant the condition of the vessel. A buyer should instruct his agents, or his surveyors, to

investigate such details as the buyer desires validated. This vessel is offered subject to prior sale, price change, or withdrawal without notice.

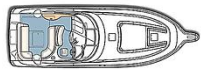
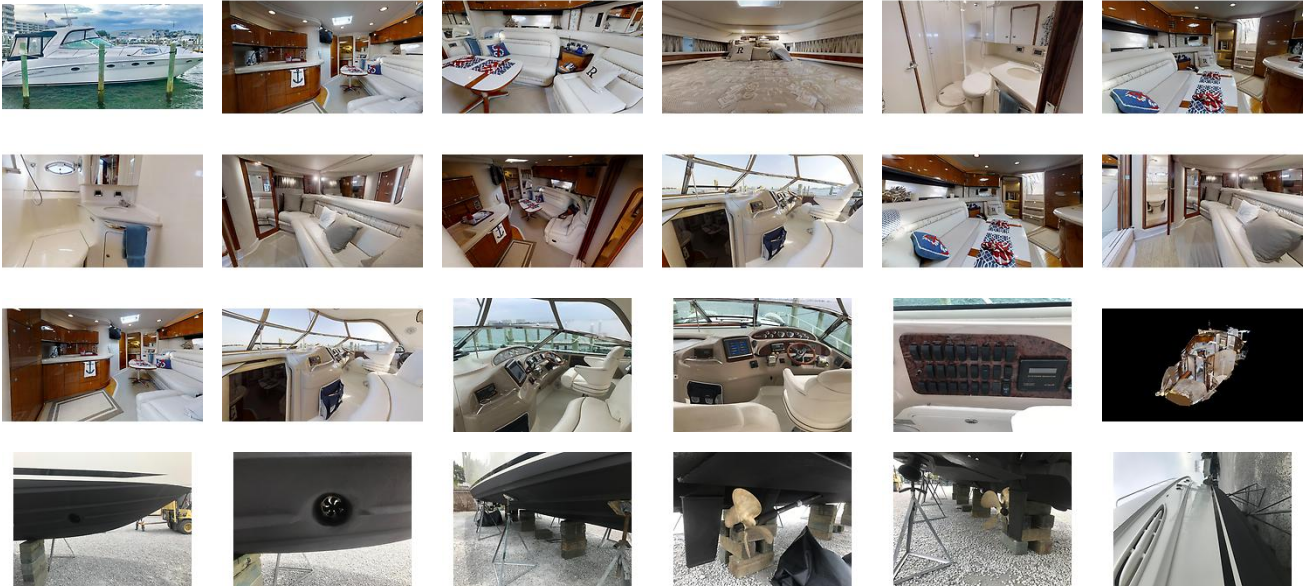
Mechanical Disclaimer

Engine and generator hours are as of the date of the original listing and are a representation of what the listing broker is told by the owner and/or actual reading of the engine hour meters. The broker cannot guarantee the true hours. It is the responsibility of the purchaser and/or his agent to verify engine hours, warranties implied or otherwise and major overhauls as well as all other representations noted on the listing.

External Links

- [3D Interactive Virtual Tour](#) Additional Media

GALLERY



LOCATION MAP



TAYLOR HOOD
 American Marine Brokerage
 13430 Gulf Beach Hwy PMB #92
 Pensacola, FL, US
 Office: 844-44-YACHT
 Mobile: 251-228-1514
taylor@yachtamerican.com

