



2004 Tiara 3200 Open

Boat Type: Sport Fishing

Address: Destin, FL, US

Price: \$169,000



OVERVIEW

Awesome opportunity on a tournament-rigged Tiara 32 Diesel Open with a tower! She sports all of the right stuff, including new Garmin electronics suite, new stereo, Lumitec underwater lights and the list goes on. She is in fantastic condition and ready to fish and cruise. This is the most fishable Tiara on the market today and she will not last long. She is conveniently located at Gulfport Yacht Club, about an hour from New Orleans and she can be shipped anywhere in the world with ease. Come have a look!

Click on the video link for some awesome running footage!

SPECIFICATIONS

Basic Information

Manufacturer:	Tiara	Vessel Name:	Reel Love
Model:	3200 Open	Boat Type:	Sport Fishing
Year:	2004	Hull Material:	Fiberglass
Category:	Power	Hull Type:	
Condition:	Used	Hull Color:	
Location:	Destin, FL, US	Designer:	
Available for sale in U.S. waters:	Yes	Flag of Registry:	

Dimensions & Weight

Length:	32 ft - 9.75 meter	Draft - max:	3 ft - 0.91 meter
LOA:	115 ft - 35.05 meter	Bridge Clearance:	-
Beam:	13 ft - 3.96 meter	Dry Weight:	12500 ft - 3810 meter

Engine

Make:	Volvo	Engine Type:	Inboard
Model:		Drive Type:	
Engine(s):	2	Fuel Type:	Diesel
Hours:	1450	Horsepower:	315 (Individual), 630 (combined)
Cruise Speed:	-	Max Speed:	-
Range:	-	Joystick Control:	No

Tank Capacities

Fuel Tank:	256 gallons - 1 tank(s)	Holding Tank:	20 gallons - 1 tank(s)
Fresh Water Tank:	38 gallons - 1 tank(s)		

Accommodations

Total Cabins:	-	Crew Cabins:	-
Total Berths:	-	Crew Berths:	-
Total Sleeps:	-	Crew Sleeps:	-
Total Heads:	1	Crew Heads:	-
Captains Cabin:	-		

DESCRIPTIONS

General specification overview

Salon

- Reverse cycle AC/Heat

- Teak & holly sole
- Leather sofa converts to double berth
- Leather dinette seating w/hi-lo pedestal table
- LCD flat screen TV
- Clarion AM/FM/CD player
- Overhead lights converted to LED

Galley

- Microwave oven
- Stove top, electric
- Corian-style countertop
- Refrigerator/freezer
- Built-in coffeemaker
- Teak wood storage cabinets

Forward Stateroom

- Queen-size island berth w/storage underneath
- Cedar-lined hanging locker
- Upper hullside shelves
- (2) Reading lights

Head

- Full shower
- Vacuflush toilet
- Storage compartment below sink
- Mirrored vanity
- Tank monitors
- Exhaust fan

Electronics and Navigational Equipment

- Qty 2 Garmin 7610xsv displays
- Garmin GMR 424xHD2 radar
- Garmin GNX 21 GPS ant display
- New heading sensor
- Garmin GXM 52 xm/wx antenna
- DT800 smart transducer
- Qty 2 Galaxy 5018 VHF antennas
- Garmin GT51M-THP dual transducer for 7610xsv
- New JL audio speakers in helm area
- New Raymarine VHF at helm
- Volvo digital gauge displays
- Trim tab controls
- New ACR remote spotlight
- Volvo electronic controls

Electrical System

- Westerbeke generator - 2018 Overhaul

- Reverse cycle A/C
- Digital AC controls
- Shore power cord
- Separate battery banks w/battery switches and parallel start option

Cockpit

- Tackle center
- Large in-deck fishboxes
- Transom livewell with clear top
- Prep station with freshwater
- Tiara custom diamond pattern non-skid surface
- Cockpit lights converted to LED
- Lumitec SeaBlaze X LED Surface Mount Underwater Lights - White and Blue with strobe

Helm

- L-shaped companion seating
- Twin helm seat
- Vented windshield
- Overhead lights converted to LED

Deck Equipment

- Entire helm deck lifts with hydraulic/electric assist for full engine access
- Day hatch for engine access
- Transom door
- Swim platform
- Wide side decks
- Non-skid surfaces
- (3) Deck hatches with built-in Ocean Air screens and privacy covers
- Full Tuna Tower with controls
- Tower mounted outriggers
- Removable buggy top
- Gunwale storage
- Gunwale rod holders
- Rocket launchers
- Stainless steel bow rail
- Molded-in fiberglass bow pulpit w/ SS roller system
- Lofrans 1500 high speed windless with 1200 feet of anchor line

Mechanical Equipment

- Electronic controls, helm and tower
- Freshwater cooling system
- Bilge pumps, auto
- Oil change pump

Exclusions

Owner's personal items.

Manufacturer Provided Description

The 3200 Open has been built with the experience and demanding standards. The brand-new hull comes in at 1 foot longer and 1 full foot wider than her predecessor. The extra foot has added significant features and benefits customers expect from Tiara Yachts. The versatile cockpit adapts easily to fishing or cruising functions and the command bridge, just one step up, provides lots of seating and great visibility. Interior amenities provide the comfort of home, and the flawless cabinetry conceals valuable storage and well thought-out designs. Volvo Penta's revolutionary new D-6 diesel engines are available, providing excellent performance tailored to your needs.

Disclaimer

The Company offers the details of this vessel in good faith but cannot guarantee or warrant the accuracy of this information nor warrant the condition of the vessel. A buyer should instruct his agents, or his surveyors, to investigate such details as the buyer desires validated. This vessel is offered subject to prior sale, price change, or withdrawal without notice.

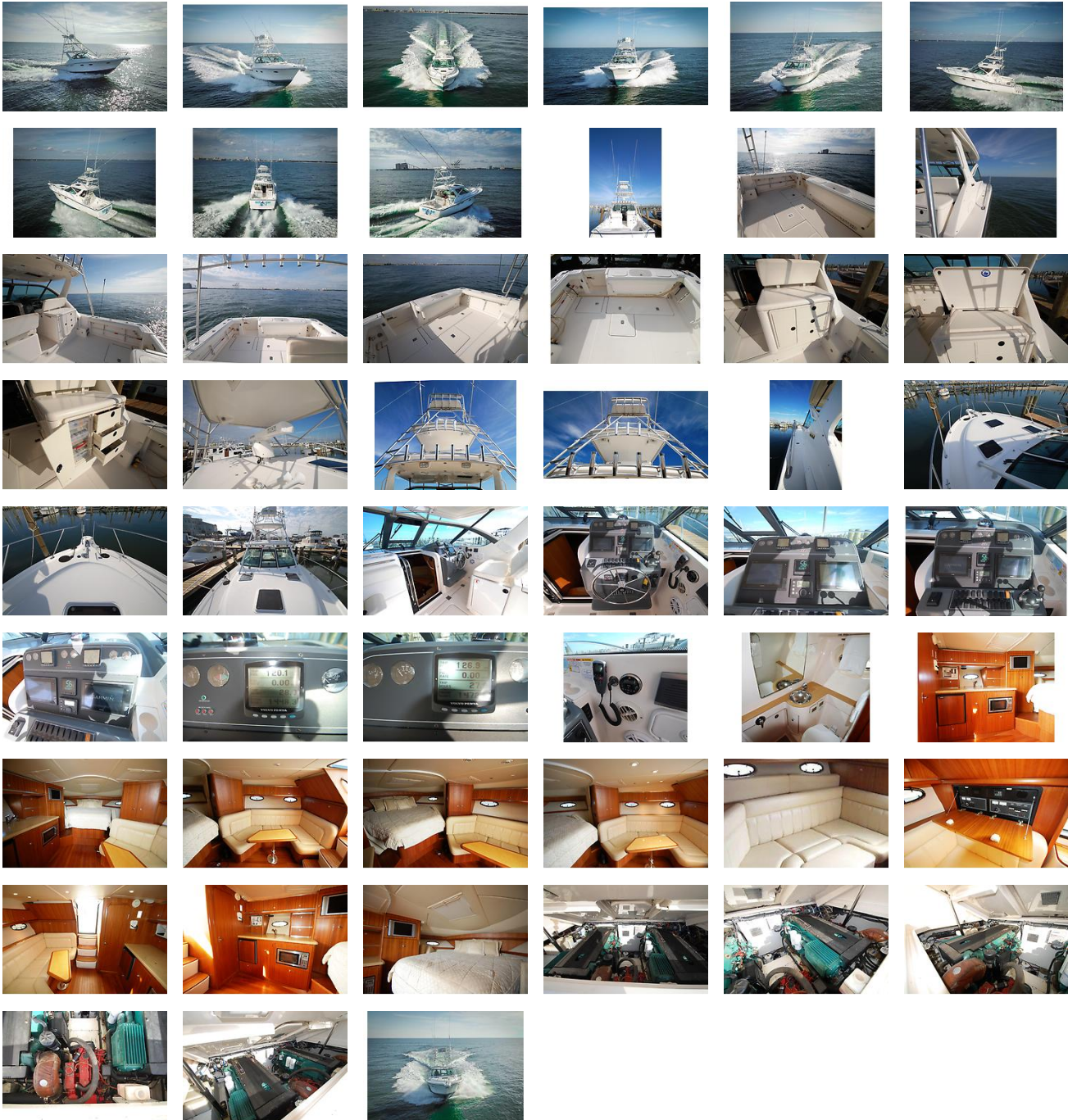
Mechanical Disclaimer

Engine and generator hours are as of the date of the original listing and are a representation of what the listing broker is told by the owner and/or actual reading of the engine hour meters. The broker cannot guarantee the true hours. It is the responsibility of the purchaser and/or his agent to verify engine hours, warranties implied or otherwise and major overhauls as well as all other representations noted on the listing.

External Links

- [Virtual Tour](#) Additional Media

GALLERY



LOCATION MAP





BEN MONTGOMERY
American Marine Brokerage
13430 Gulf Beach Hwy PMB #92
Pensacola, FL, US
Office: 844-44-YACHT
Mobile: 850-259-8009
ben@yachtamerican.com

